

# LED Lighting



## LED Exterior

Thank you for your interest in Kaper II's 52 diode stop / turn / tail lamp.

Kaper II, Inc.  
2212 1/2 Parrott Way  
Kelso, WA 98626 USA

tel: 800-336-2011  
fax: 360-423-0785  
www.kaperii.com

### RATED

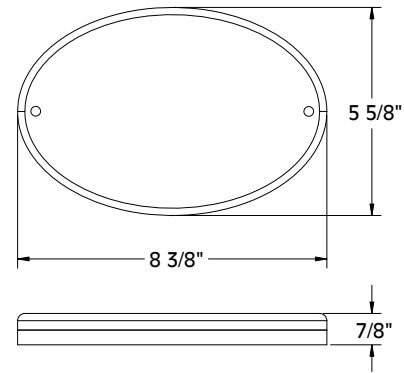
# STI S2 T2 16 A 00

### FEATURES

- 8 3/8" oval.
- Surface mount.
- Reflective lens.
- 6 diode license plate lamp.
- White ABS base and bracket.

## PRODUCT INFORMATION

### DIMENSIONS



### SPECIFICATIONS

#### Model: L50-0049

- Light source: 52 light emitting diodes
- Designed at: 12.8VDC, 0.681 Amp;  
14VDC, 0.867 Amp
- PC lens
- ABS housing
- ABS mounting bracket

### OTHER OPTIONS

#### Model: L15-0030

Without license plate bracket.

- Light source: 52 light emitting diodes
- Designed at: 12.8VDC, 0.681 Amp;  
14VDC, 0.867 Amp
- PC lens
- ABS housing

### PRODUCT RECOMMENDATION

To reduce the risk of fire, burns, or injury, use lights only in the manner intended by Kaper II. Should you have questions regarding your installation, please contact Kaper II before applying power.